

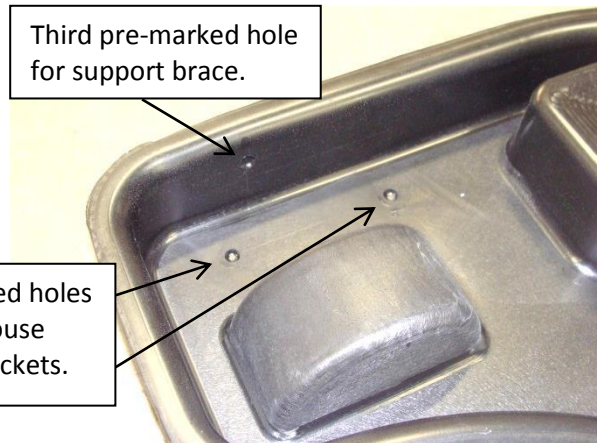
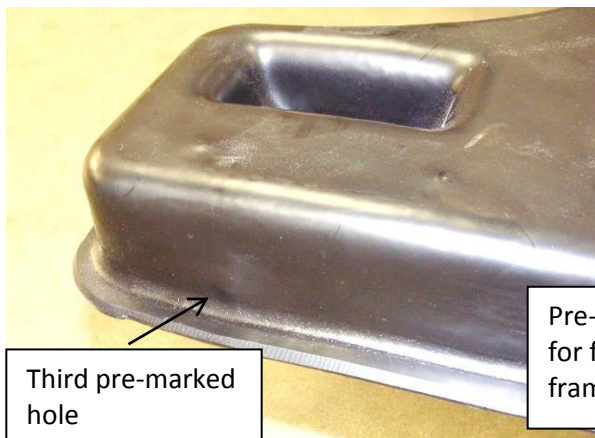
Tools required for seat and support brace installation:  
Ratchet & 10mm socket  
10mm wrench  
7/16 socket  
7/16 wrench  
Drill/Driver  
½" Wrench  
½" socket  
5/16" Drill Bit

## Installing the seating system before assembling the frame and canvas will make installation easier.

1. Locate the three pre-marked holes near each wing for the support brace. Turning the sled upside down will make finding them easier.



Sled turned upside down.

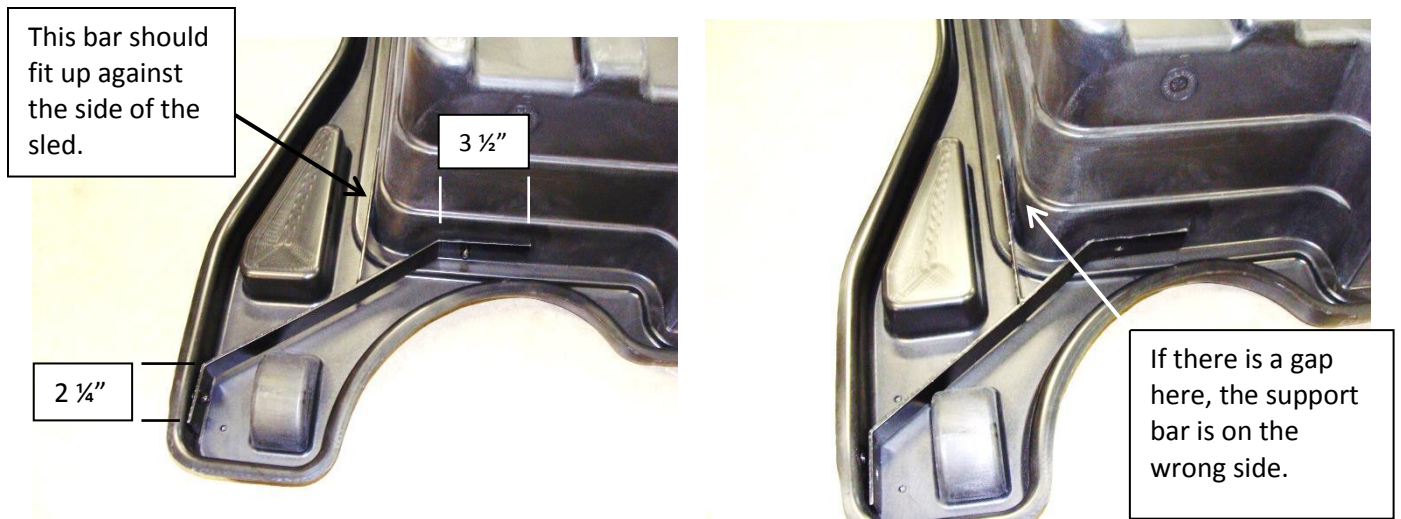


Sled turned upside down.

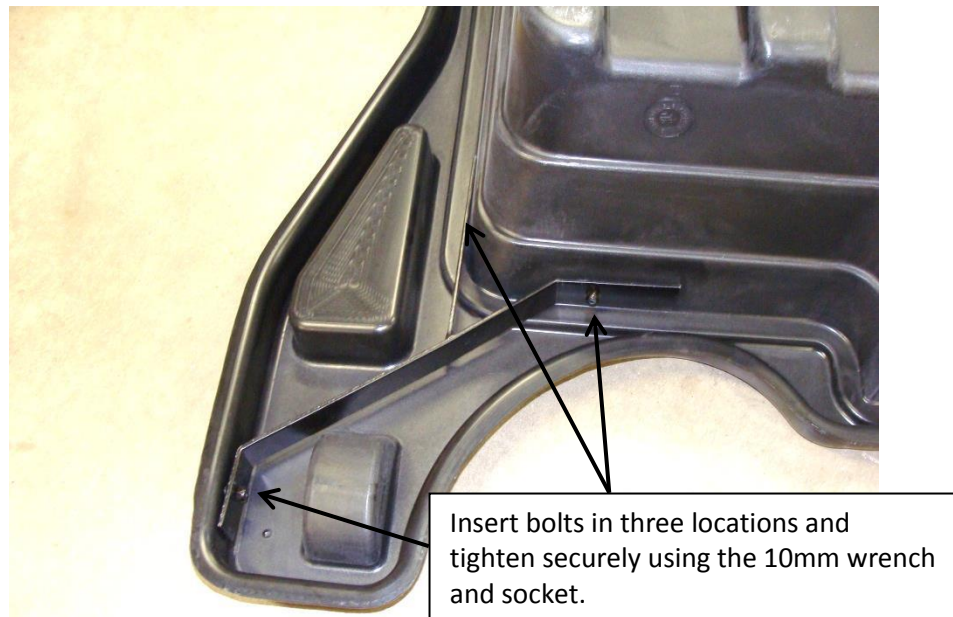
2. Drill out the six pre-marked holes (3 for each wing) as shown using a 5/16" drill bit.



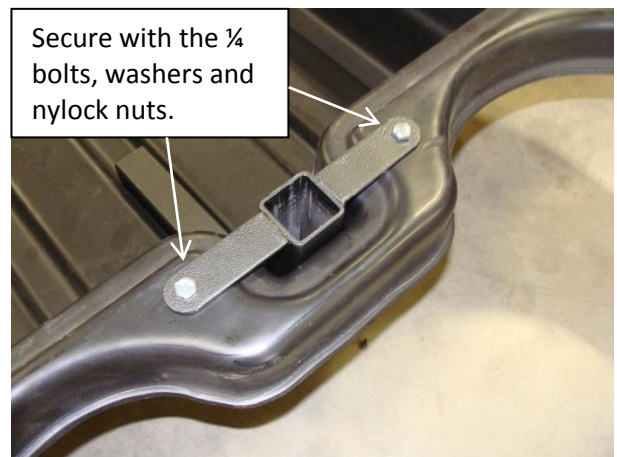
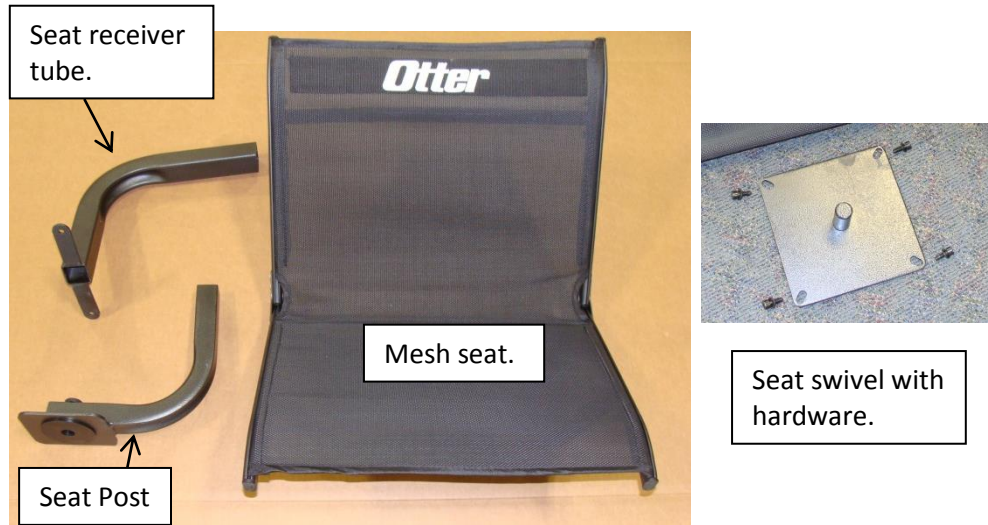
3. Turn the sled upside down and fit the support brace to the sled as shown. There is a left and a right brace. The brace should fit close to the side of the sled.



4. Insert black bolts into all three holes. Once the bolts are all installed they may be tightened using the washers and the nylock nuts. The holes in the plastic may be slotted if necessary to get the bolts to line up with the holes in the brace. Repeat on other side.



5. Position sled as shown. Insert the seat receiver tube into the cutout area on the sled. Press down and in on the tube and mark the two holes in the top bracket with a marker or sharp object. Drill out the two marked holes and secure with the  $\frac{1}{4}$  x  $\frac{3}{4}$  bolts, washers and nylock nuts.



6. Drill through the sled using the lower hole in seat receiver tube as a guide. Use a 5/16 drill bit for this. Hole in plastic may need to be enlarged slightly to fit bolt through. Secure with the 5/16 x 2 1/4" bolt, washer and nylock nut.



7. Attach seat swivel to bottom of seat using the allen head screws and washers with the supplied wrench.



8. Insert seat post into receiver tube and then insert the seat onto the seat post. Lubricating the seat post and tube will allow it to slide in and out easier.

